

Pennsylvania Pinto Horse Club Bulletin

September 2009

Inside this month's issue:

Upcoming meeting information Financial Statements
Editor's note Member profile
Year End final July Membership
point standings meeting minutes

Thanks to everyone who supported the club this year, either by showing your horse or working behind the scenes. We appreciate each one of you and your efforts.

The purpose of this non-profit organization shall be to promote and encourage the breeding of Pinto Horses and to promote general interest in the Pinto Horse within the state of Pennsylvania. To hold such horse shows and other events as shall be deemed advisable and necessary to the promotion of the Pinto Horse of America. To promote good sportsmanship and good fellowship and to improve the general condition and welfare of all horses and any other social endeavors to promote the Pinto Horse; to oppose any activity that would be or tend to be derogatory or inauspicious to the Pinto Horse or to the Pinto Horse Association of America Inc., and to further the purpose of the Pinto Horse Association of America Inc. on a local level in the manner prescribed by the Nation Association, thereby assisting the National Association to continue its promotional work on a national and international basis.



Congratulations to all of the Year-End Award winners for the club this year in the various classes and divisions. Final results are in the newsletter; please review them and let Sue Bixler know if you have any questions or corrections.

Results from the July and August shows are on the website.



Pennsylvania Pinto Horse Club Bulletin Advertising Rates

Rates are per issue unless otherwise stated

Covers: front or back – 5 issues, \$75.00

Classified Ads: \$0.10 per word; \$2.00 minimum

Full page printed: \$20.00

Business Card: \$40.00 – 5 issues

½ page printed: \$10.00

Any Club news such as foal announcements and achievements are free!

Inserts: \$10.00 (65 copies needed)

The Bulletin will be printed in February, May, July, September and November; the deadline for each will be the first of the preceding month, ie October 1st for the September issue.

Make checks payable to: The Pennsylvania Pinto Horse Club. Mail all copy, inserts or news to: Jeri Miller, 18 Rosedale, Hershey, PA 17033; phone 717-534-1983 email: drivingincolor@yahoo.com

A note from
your editor.....



Another show season is over, and while we did not do as well as we would have hoped financially, we did see some new faces this year.

There will be a membership meeting in October; a very “spooky” flyer is in the newsletter with more information. Please try to attend or at least let one of the officers know your ideas for next year.



PENNSYLVANIA PINTO HORSE CLUB

2009 OFFICERS AND CHAIRPERSONS

President: John Gribble, 71 Spring Lane, Dillsburg, PA 17019 717-432-8269

Vice President: Ralph Peiper, 161 Clemson Dr., Carlisle, PA 17013

Secretary: Sue Bixler, 99 Lay Rd, Newville, PA 17241

Treasurer: Denise Paver, 3465 Spring Rd, Carlisle, PA 17013

2009 COMMITTEES

Year End Points: Sue Bixler

Newsletter and Website: Jeri Miller

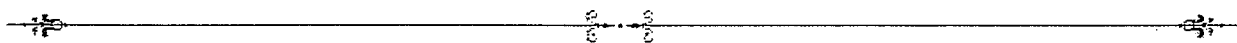
Banquet: Denise Paver

Horse Shows: Sue Bixler, Ralph Peiper, John Gribble, Denise Paver

Fund Raisers: Ralph Peiper and Denise Paver

BOARD OF DIRECTORS

Dawn Bell, Jeri Miller, Sandy Long and Maynard Long



MEMBERSHIP APPLICATION

2009 Pennsylvania Pinto Horse Club Membership Form

NAME: _____ DATE: _____

ADDRESS: _____ E-MAIL ADDRESS: _____

CITY: _____ STATE: _____ ZIP CODE: _____

PHONE: _____ PIHA NATIONAL ID# _____

Family Membership: \$25 (2 Votes) (Immediate family is defined as: All family members living in one house)

List Family Members: _____

Single Membership: \$20 (1 Vote)

Youth Membership: \$10.00 (18 YRS. AND UNDER)---NO VOTE

Youth Birth date: _____

CIRCLE ONE: **NEW MEMBERSHIP** **RENEW MEMBERSHIP**

MAKE CHECKS PAYABLE TO : PA. PINTO HORSE CLUB

MAIL TO: SUE BIXLER, 99 LAY ROAD, NEWVILLE, PA 17241

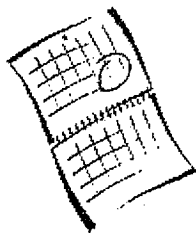
PA Pinto Member Profile

Our Member Profile this month is Sue Bixler of Newville, PA. Sue is our club secretary as well as points person. She has been involved in horses for 36 years and has ridden almost every discipline: hunters, jumpers, pleasure horses and dressage. Sue now enjoys showing her halter horses, mainly her mare "IM Hauntingly Special" ("Blaze"), and she also owns her full brother, "Patch".

Sue also enjoys decorating for Halloween, which you will see if you attend the October membership meeting! She erects buildings at her home, as well as Halloween figures and special effects. Her house is the talk of the neighborhood! Sue also enjoys collecting Breyer horses, painting, and puzzles, but mostly she enjoys her quiet life in the country. She has raised two boys and now has a granddaughter who seems to love horses also.

(...look for Sue's full profile on the website...)

(If you would like to be featured in the next PA Pinto Member profile, please email your information to drivingincolor@yahoo.com.)



UPCOMING EVENTS

November 5-8 – Pinto Congress, Expo Square, Tulsa, OK

October 17, 2009 – Pennsylvania Pinto Horse Club meeting, 6 PM

(flyer in newsletter)



Club and Member Websites

"Pennsylvania Pinto Online"
www.drivingincolor.com/papinto.html

Julie Good
"Azariah Miniatures at Meadowind Farm"
www.azariahminiatures.com

Jeri Miller
"Driving In Color"
www.drivingincolor.com

Amy Welker
"Maple Hill Stables"
www.geocities.com/maplehillstables

Meeting Minutes from the July 11, 2009 meeting.

5 members present. John Gribble, Susan Bixler, Denise Paver, Maynard Long & Bob Egolf

John called the meeting to order at 7:10pm.

Denise Paver gave the treasury report. From the May show, \$2400.00 in entry fees, after expenses, we made \$385.71.

Balance in the treasury is \$4549.64

We had a small discussion on money and where it goes to hold a show; judges fees, Pinto Association fees, helpers, etc.

Lengthy discussion on hiring judges. It was suggested by a member, via email, to hire different judges as we seem to use the same ones each year or every other year. Denise Paver has a budget of \$450.00 per judge. It's hard to hire judges when most want around \$800- per day. Club cannot afford them and we are limited on Pinto judges in this area of the country.

Talked on how the club could pull in more people to show at our shows. Other Pinto shows are large while some clubs are still struggling.

John Gribble brought up the idea to get a permit to hold raffles. Everyone thought it was a good idea. No other discussion on that. Denise Paver will still hold the fund raiser this Fall like in years past. The club does make some money off of it so its worthwhile doing it again.

Discussion on a possible picnic early fall which was submitted by Jeri Miller via email. John came up with an idea to have a pig roast and will check prices on pigs. Denise will check on someone to cook it on a huge roaster. No date set due to conflicting dates for other events. No location decided either.

John Gribble adjourned the meeting with all in agreement.

Submitted by

Susan Bixler, Pinto club secretary

Financial Report for May - August 2009

BALANCE April 30, 2009 4,753.68

DATE		
5/21/2009	2009 Membership	20.00
6/1/09	Petty Cash	300.00
6/1/09	PA Pinto Memberships	115.00
6/1/09	Show entries	2400.00
6/1/09	Stalls (Long Acres)	568.00
6/1/09	PtHA mini measurement cards	5.00
6/1/09	PtHA memberships	35.00
7/10/09	Newsletter Advertisement	20.00
7/20/09	Membership	20.00
7/27/09	Show Entries	1,312.00
8/10/2009	Petty Cash	300.00
8/10/2009	Show Entries	1,200.00
	TOTAL INCOME	6,295.00

DATE	Check #	Debits	
5/3/09	1028	Markel Insurance Co. (2009 Insurance)	504.00
5/18/09	Debit Card	Office Max (ink for printer)	56.45
5/18/09	Debit Card	Debit Card charge	0.50
5/21/09	1029	Petty Cash	300.00
5/21/09	1030	Stineman Ribbon Co.	294.24
5/31/09	1031	Judge - Joe Boyle	400.00
5/31/09	1032	Judge - Phil Maniscalco	400.00
5/31/09	1033	Trisha Egolf (announcer)	25.00
5/31/09	1034	Tom Darhower (ring steward)	25.00
5/31/09	1035	Kelly Gribble (secretary)	30.00
5/31/09	1036	Ralph Peiper (ring crew)	20.00
5/31/09	1037	PtHA (show results)	490.00
5/31/09	1038	Long Acres (Grounds Rental)	200.00
5/31/09	1039	Sherry Kopenhaver (food stand)	17.25
5/31/09	1040	Stalls (Long Acres)	568.00
6/2/09	1041	Sue Bixler (postage)	36.60
7/10/09	1042	Petty Cash for show	300.00
7/25/09	Debit Card	Super 8 Motel (Judge's room)	59.88
7/26/09	1043	Heien Gildein (Judge)	450.00
7/26/09	1044	George Martin(Judge)	500.00
7/26/09	1045	Kelly Gribble (secretary stand)	30.00
7/26/09	1046	Ralph Peiper (ring crew)	20.00
7/26/09	1047	Sandy Long (show grounds)	200.00
7/26/09	1048	Trisha Egolf (announcer)	25.00
7/26/09	1049	Sherry Koppenhaver (food stand)	14.00
7/26/09	1050	PtHA (show results)	253.00
7/26/09	1051	VOID	
8/3/09	1052	Sue Bixler (postage fees)	18.75
8/7/09	Debit Card	Office Max (Ink)	46.93
8/9/09	1053	Larry Thurber (judge)	425.00
8/9/09	1054	David Phillips (judge)	330.00
8/9/09	1055	Trisha Egolf (announcer)	25.00
8/9/09	1056	Kelly Gribble (secretary)	30.00
8/9/09	1057	Void check	
8/9/09	1058	Sherry Koppenhaver (food stand)	13.50
8/9/09	1059	Void check	
8/9/09	1060	PtHA show results	287.00
8/9/09	1061	Sue Bixler (postage fees)	5.95
8/9/09	1062	Tom Darhower (ring steward)	20.00
8/9/09	Cash	Long Acres Grounds Fees	200.00
8/10/09	Debit Card	Post ATM Fee	0.50
		TOTAL DEBITS	6,621.55

ACCOUNT BALANCE 4,427.13

July 26, 2009 Show Financial Report

Income		
	Stall Fees	35.00
	Show entries	1277.00
		<hr/>
		1,312.00

Debits		
	Judge - Helen Gildein	450.00
	Judge - George Martin	500.00
	Motel (Judge)	59.88
	Trisha Egolf (announcer)	25.00
	Kelly Gribble (secretary)	30.00
	Ralph Peiper (ring crew)	20.00
	Sherry Kopenhaver (food stand)	14.00
	Show day insurance	168.00
	Ribbons	75.00
	Long Acres (Grounds Rental)	200.00
	Long Acres (stall fees)	35.00
	PtHA (show approvals)	40.00
	PtHA (show results)	253.00
	Postage for show results	10.35
TOTAL DEBITS		<hr/>
		1,880.23

Loss		\$568.23
-------------	--	-----------------

August 9, 2009 Show Financial Report

Income		
	Petty Cash	300.00
	Show entries	1400.00
		<hr/>
		1,700.00

Debits		
	Petty Cash	300.00
	Judge - Larry Thurber	425.00
	Judge - David Phillips	330.00
	Motel for Judges	92.11
	Long Acres Grounds Fee	200.00
	Trisha Egolf (announcer)	25.00
	Kelly Gribble (secretary)	30.00
	Sherry Kopenhaver (food stand)	13.50
	Tom Darhower (ring steward)	20.00
	Show day insurance	168.00
	Ribbons	75.00
	PtHA (show approvals)	40.00
	PtHA (show results)	287.00
	Postage for show results	5.95
TOTAL DEBITS		<hr/>
		2,011.56

Loss		\$311.56
-------------	--	-----------------

PA Pinto Horse Club 2009 Points

	5/31 Judge A	5/31 Judge B	7/26 Judge A	7/26 Judge B	8/9 Judge A	8/9 Judge B	Total
NOVICE AMATEUR MARES							
Im Hauntingly Special	4	4	5	5	5	4	27
Allmine	-	-	3	4	4	5	16
LA Stylish Gabrielle	3	3	2	2	3	2	15
Artfully Done	-	-	4	3	2	3	12
Painted Honey B	1	2	1	1	1	1	7
LA Art Teacher *	2	1	-	-	-	-	3
NOVICE AMATEUR Geld/Stallions							
Cowboy Coosa	2	1	2	2	1	1	9
Honky Tonk Hustler *	1	2	-	-	-	-	3
Zippos Painted Verse *	-	-	1	1	-	-	2
AMATEUR MARES							
Im Hauntingly Special	5	5	6	6	6	5	33
Allmine	6	6	4	4	5	6	31
Pennies Hunter Dell	-	-	5	5	4	4	18
LA Stylish Gabrielle	4	4	3	1	3	2	17
Dominos Thumbelena	3	3	2	2	2	3	15
Painted Honey B	1	2	0	0	1	1	5
HF Double Pleasure *	-	-	1	3	-	-	4
LA Art Teacher *	2	1	-	-	-	-	3
JR. STOCK TYPE MARES							
Allmine	2	2	3	3	5	6	21
LA Stylish Gabrielle	1	1	2	0	2	2	8
SR. STOCK TYPE MARES							
Im Hauntingly Special	3	5	6	6	6	5	31
MD NORA Lee	4	4	4	4	4	3	23
Pennies Hunter Dell	-	-	5	5	3	4	17
Pretty Casual *	6	6	-	-	-	-	12
Imashameless Chassis *	5	3	-	-	-	-	8
Dominos Thumbelena	2	2	1	1	-	-	6
PAinted Honey B	1	1	0	0	1	1	4
HF Double Pleasure *	-	-	0	2	-	-	2
AMATEUR Geldings/Stallions							
LA Cedar Creek Fever *	5	4	-	-	-	-	9
A Conclusive Legacy *	4	5	-	-	-	-	9
Cowboy Coosa *	3	2	-	-	-	-	5
Honky Tonk Hustler *	2	3	-	-	-	-	5
Mr. Sweet Spot *	1	1	-	-	-	-	2
JR. Stock Type Geldings							
Art Breaker	4	4	3	3	4	4	22
LA Cadillac Jack	3	1	1	1	3	3	12
Cowboy Coosa	2	2	2	2	2	2	12
Honky Tonk Hustler *	1	3	-	-	-	-	4

	5/31	5/31	7/26	7/26	8/9	8/9	Total
	Judge A	Judge B	Judge A	Judge B	Judge A	Judge B	
SR. Stock Type Geldings							
Moons Best Star *	3	1	-	-	-	-	4
LA Cedar Creek Fever *	2	2	-	-	-	-	4
Hunter Type Geldings							
A Conclusive Legacy *	1	3	-	-	-	-	4
Stock / Hunter Stallions							
Spruces Imperial Dream *	1	1	-	-	-	-	2
Mini Halter							
A Classic Romance	2	2	-	-	5	4	13
Hidden Timbers Ghostly Miracle	4	3	-	-	3	2	12
LA Short Circuit	1	1	1	1	4	3	11
Echo Falls Prince	3	4	-	-	1	1	9
Wee Willie Double Dutch *	-	-	-	-	2	5	7
Mini Color							
Hidden Timbers Ghostly Miracle	4	3	-	-	5	5	17
A Classic Romance	3	4	-	-	3	3	13
LA Short Circuit	1	2	-	-	4	4	11
Echo Falls Prince	2	1	-	-	1	1	5
Wee Willie Double Dutch *	-	-	-	-	2	2	4
Overo Color							
IM Hauntingly Special	3	3	2	2	-	-	10
Impulsions on the rocks *	2	1	-	-	-	-	3
Sunny *	1	2	-	-	-	-	3
Zippo's Painted Verse *	-	-	1	1	-	-	2
Tobiano Color							
LA Stylish Gabrielle	3	5	5	3	5	4	25
MD Nora Lee	2	6	2	2	3	5	20
Artfully Done	-	-	3	5	2	3	13
LA Art Teacher *	6	3	-	-	-	-	9
LA Cedar Creek Fever *	4	4	-	-	-	-	8
Spruces Imperial Dream *	5	2	-	-	-	-	7
LA Cadillac Jack	1	0	1	1	1	1	5
Pied Pipers Mistress *	0	1	-	-	-	-	1
Yearling Longe Line							
LA Stylish Gabrielle	2	2	1	1	-	-	6
Honky Tonk Hustler *	0	0	-	-	-	-	0
NOVICE AMATEUR WALK/TROT							
Painted Honey B *	4	4	-	-	-	-	8
Cowboy Coosa *	2	3	-	-	-	-	5
Impulsions on the rocks *	3	1	-	-	-	-	4
Misty Classic Hendo *	1	2	-	-	-	-	3

	5/31 Judge A	5/31 Judge B	7/26 Judge A	7/26 Judge B	8/9 Judge A	8/9 Judge B	Total
Youth leadline							
Rogue Britner *	1	1	-	-	-	-	2
Youth Halter Geldings							
HF Artful Doger	2	2	1	1	1	1	8
Moons Best Star *	3	3	-	-	-	-	6
Sunny *	1	1	-	-	-	-	2
NOVICE AMATEUR western Perf.							
Painted Honey B	3	2	1	1	1	1	9
Cowboy Coosa	2	3	2	2	-	-	9
Impulsions on the Rocks *	4	4	-	-	-	-	8
Honky Tonk Hustler *	1	1	-	-	-	-	2
Domino's Thumbelena *	-	-	-	-	1	1	2
NOVICE AMATEUR English Perf.							
LA Art Teacher *	4	4	-	-	-	-	8
Misty Classic Hendo *	2	2	-	-	-	-	4
Amateur Western Performance							
Domino's Thumbelena	11	11	5	5	4	4	40
Zappers Lady Bug *	8	8	-	-	-	-	16
LA Spray Artist	4	6	-	-	1	1	12
LA Cedar Creek Fever *	5	5	-	-	-	-	10
Artfully Done	-	-	1	1	3	3	8
A Conclusive Legacy *	4	3	-	-	-	-	7
LA Art Teacher *	4	3	-	-	-	-	7
HF Double Pleasure *	-	-	2	2	-	-	4
Impulsions on the rocks *	2	1	-	-	-	-	3
Cowboy Coosa *	0	2	-	-	-	-	2
Honky Tonk Hustler *	1	0	-	-	-	-	1
Amateur English Performance							
Misty Classic Hendo *	2	2	-	-	-	-	4
Open Western Performance							
MD Nora Lee	8	9	7	8	10	10	52
Domino's Thumbelena	5	5	-	-	5	4	19
Zappers Lady Bug *	8	7	-	-	-	-	15
Painted Honey B	-	-	2	2	2	3	9
LA Art Teacher *	5	4	-	-	-	-	9
Art Breaker	-	-	1	1	2	2	6
Hot Scotch N Soda *	2	3	-	-	-	-	5
HF Artful Doger *	-	-	-	-	2	2	4
Cowboy Coosa	-	-	1	1	-	-	2
Open English Performance							
MD Nora Lee	4	4	-	-	1	1	10
LA Art Teacher *	2	2	-	-	-	-	4

	5/31	5/31	7/26	7/26	8/9	8/9	Total
	Judge A	Judge B	Judge A	Judge B	Judge A	Judge B	
Youth Western Performance							
HF Artful Doye	8	7	3	6	2	2	28
Sunny	5	6	7	4	-	-	22
Imashameless Chessis *	5	5	-	-	-	-	10
Moons Best Star *	3	3	-	-	-	-	6
Died Pipers Mistress *	1	1	-	-	-	-	2

Driving Mini							
Hidden Timbers Ghostly Miracle	6	9	-	-	9	8	32
Echo Falls Prince	9	6	-	-	6	8	29
A Classic Romance	6	4	-	-	6	5	21
LA Short Circuit	1	2	-	-	1	1	5

Miniature							
LA Short Circuit	3	3	1	1	5	4	17
Hidden Timbers Ghostly Miracle	4	4	-	-	4	5	17
Echo Falls Prince	1	1	-	-	2	2	6
A Classic Romance	2	2	-	-	1	1	6
Wee Willie Double Dutch *	-	-	-	-	3	3	6

Please contact Sue Bixler if you have any questions.

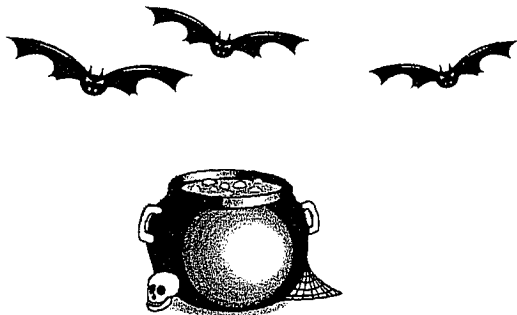
* Horse or Mini did not show under required number of judges to qualify for year end awards.

ANNUAL PA PINTO CLUB MEETING
OCTOBER 17, 2009 6PM
TO BE HELD AT SUE BIXLER'S "MORBID MANOR"

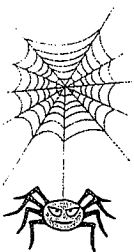
COME JOIN US AT "MORBID MANOR" FOR A FUN FILLED EVENING.- THE
COUNTESS OF "MORBID MANOR" WILL BE SERVING A GHOULISH MEAL
BEFORE THE MEETING. YOU WILL HAVE A HAUNTINGLY GOOD TIME.

JUST REMEMBER ONE THING....

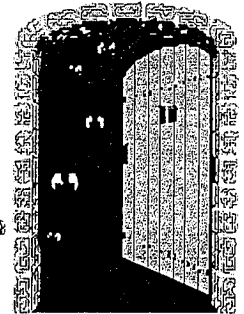
ONE NEVER KNOWS WHAT YOU MAY ENCOUNTER
ON A CHILLY WINDY OCTOBER NIGHT AT MORBID MANOR!!



THE ANNUAL MEETING WILL INCLUDE A DISCUSSION ON SHOWS FOR NEXT YEAR, FUND RAISERS,
2009 YEAR END AWARDS, ANY COMMITTEE OR OFFICER CHANGES, AND ANYTHING YOU WOULD
LIKE TO SEE THE CLUB DO FOR 2010. WE HAD DISCUSSED A PICNIC NEXT YEAR SO WE NEED
INPUT ON WHERE AND WHEN. THE MEETING IS OPEN FOR ANY DISCUSSION OR CONCERNS YOU
MAY HAVE. SO COME ON OVER AND ENJOY AN EVENING IN A HAUNTED HOUSE COMPLETE WITH
A PINTO CLUB MEETING. AND WHO KNOWS WHO YOU MAY RUN INTO!!!



COME ON IN, IF YOU DARE



DIRECTIONS: FROM INTERSTATE 81, TAKE THE NEWVILLE EXIT FROM EITHER NORTH OR
SOUTH. HEAD NORTH TOWARDS NEWVILLE. YOU WILL FOLLOW THIS UNTIL YOU GET INTO
NEWVILLE. AT REDLIGHT IN TOWN, GO STRAIGHT THRU AND MAKE THE FIRST LEFT ONTO
GREEN ST. HARDWARE STORE WILL BE ON YOUR RIGHT. FOLLOW UNTIL YOU CROSS A STEEL
BRIDGE AND MAKE AN IMMEDIATE RIGHT ONTO WHISKEY RUN RD, AS SOON AS YOU GET OFF
THE BRIDGE. FOLLOW TO STOP SIGN, STRAIGHT ACROSS AND FOLLOW TO THE FIRST ROAD ON
YOUR LEFT WHICH IS LAY RD. MAKE A LEFT ONTO LAY ROAD, THEN AN IMMEDIATE LEFT INTO
OUR DRIVEWAY. YOU CAN'T MISS IT WITH THE HUGE DISPLAY FOR HALLOWEEN OUT FRONT.
ANY QUESTIONS CALL SUE AT 717-776-3385 OR EMAIL ME AT SBSCRAPPY@MSN.COM